



Katalog rješenja toplinskih mostova
Webinar, 26.05.2020

Irena Hošpel, Product manager wall Wienerberger Adriatic

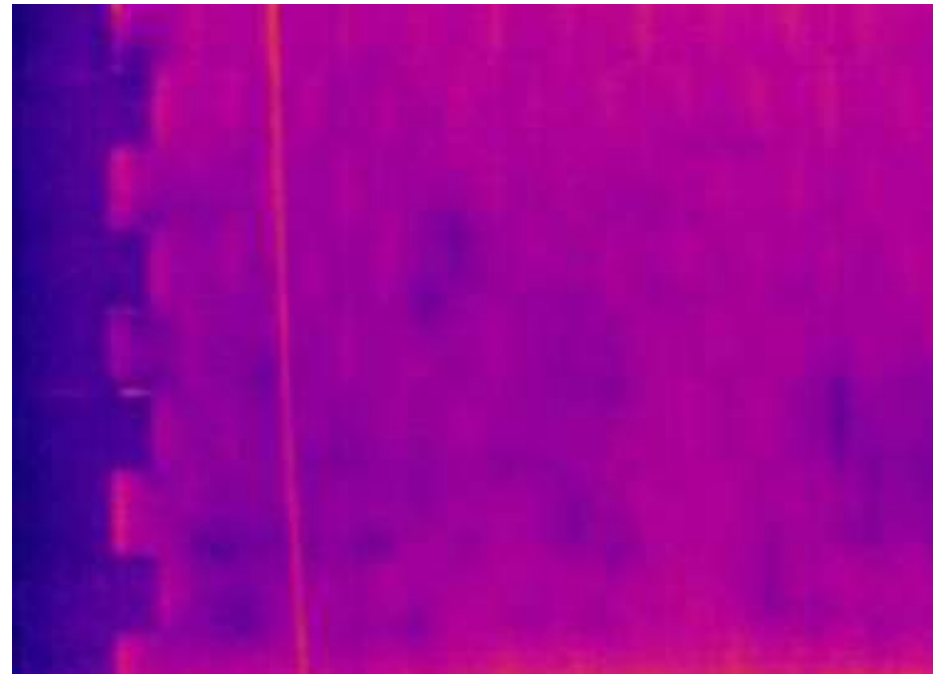
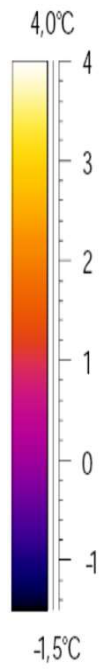
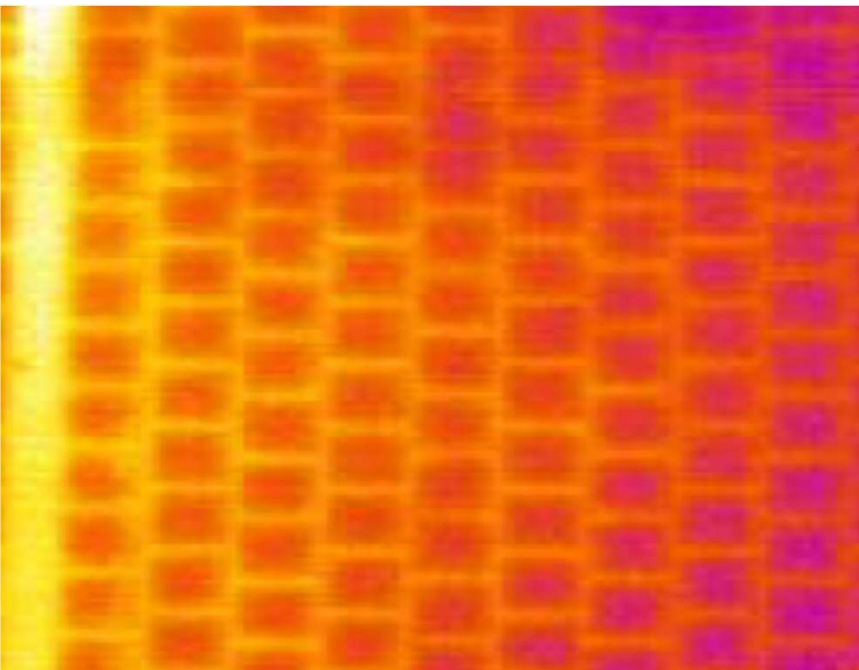
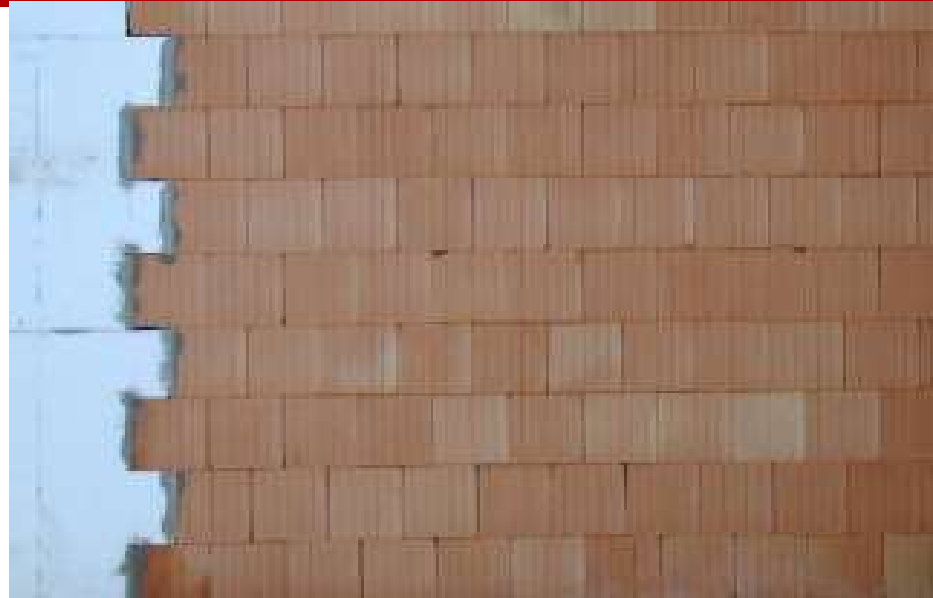
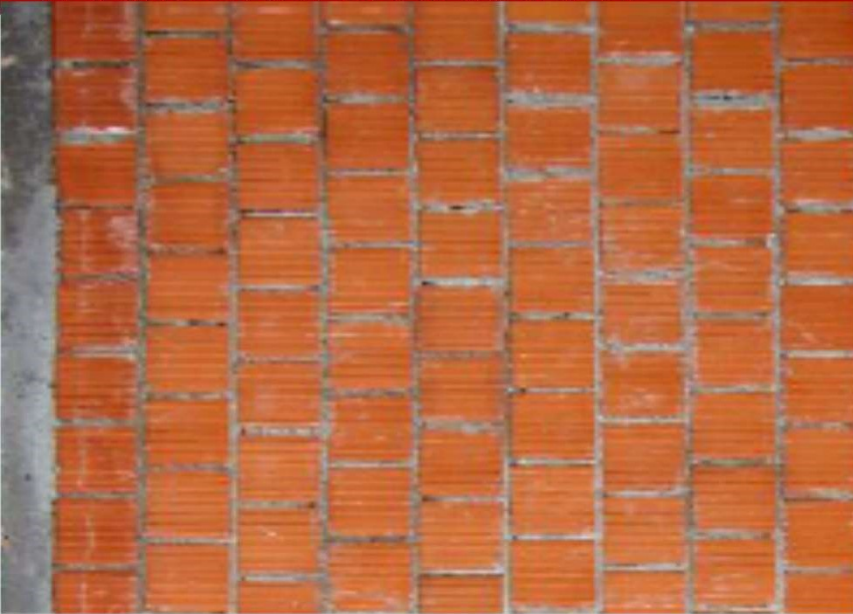




- Porotherm IZO Profi-Monolitna ovojnica zgrade
- Kvalitetna, optimalna i trajna systemska rješenja za toplinske mostove
- Vrhunska energetska svojstva i dodana vrijednost za korisnika

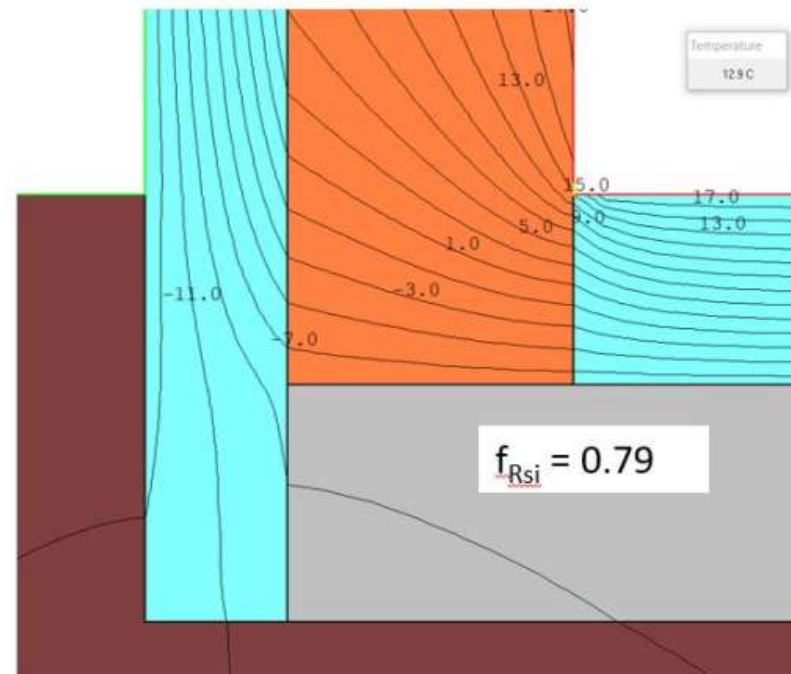
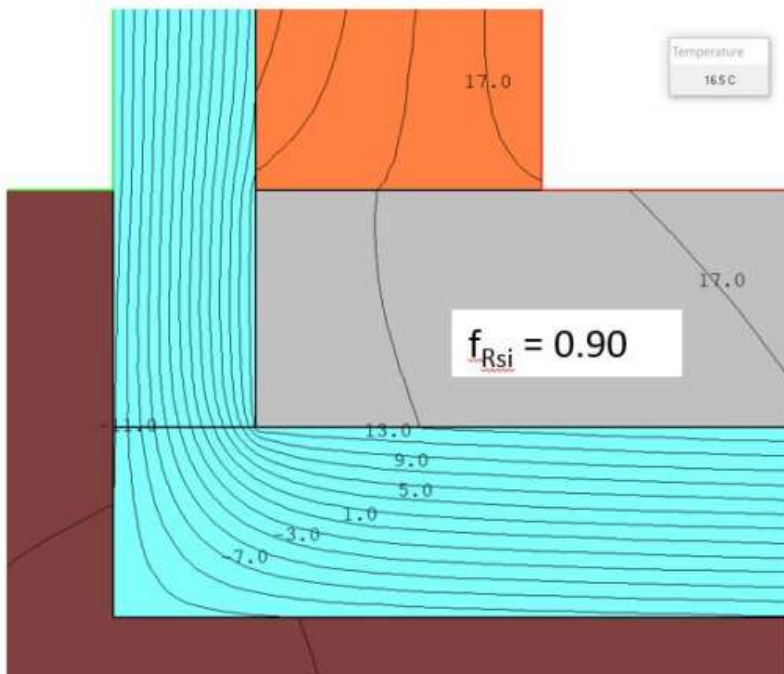

Wienerberger

TERMOGRAFSKA ANALIZA

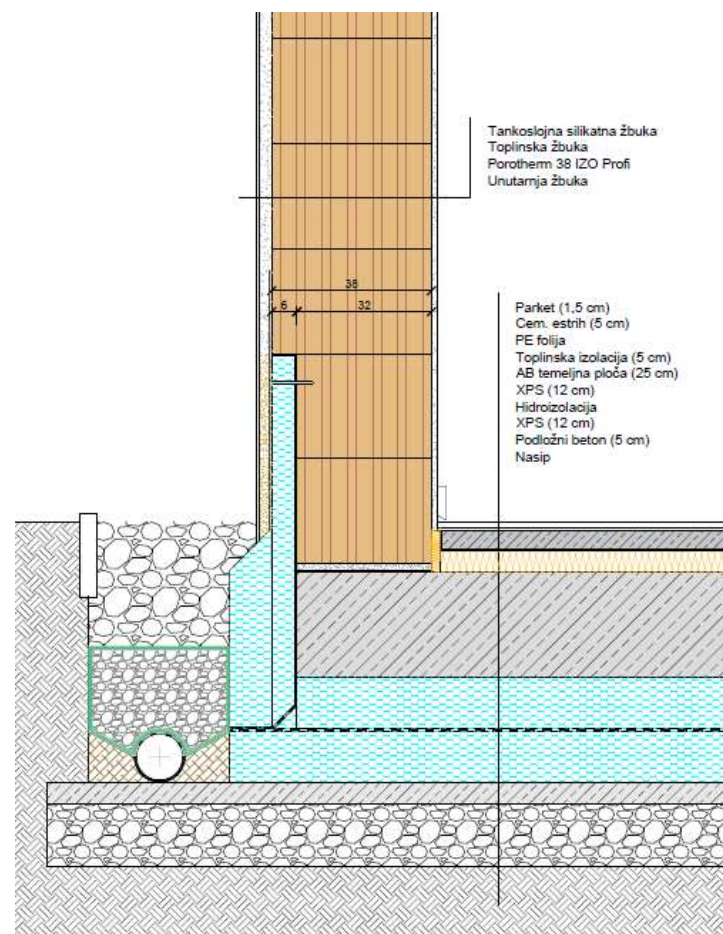


Temeljna ploča – koeficijent temperature unutarnje površine

$$f_{Rsi} = \frac{(T_{min} - T_e)}{(T_i - T_e)} > 0.80$$

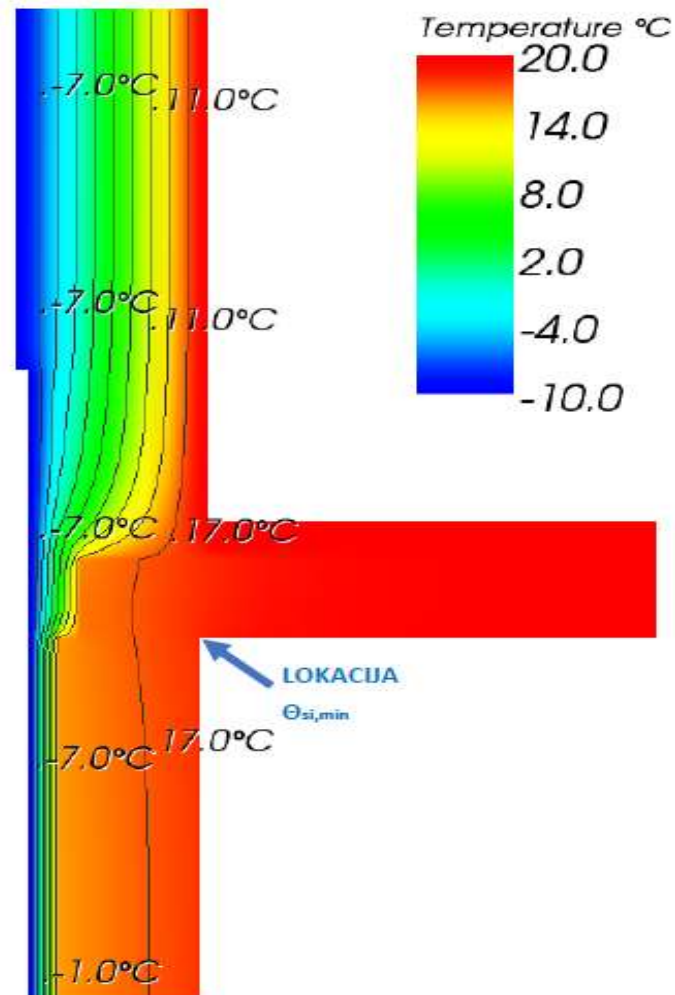
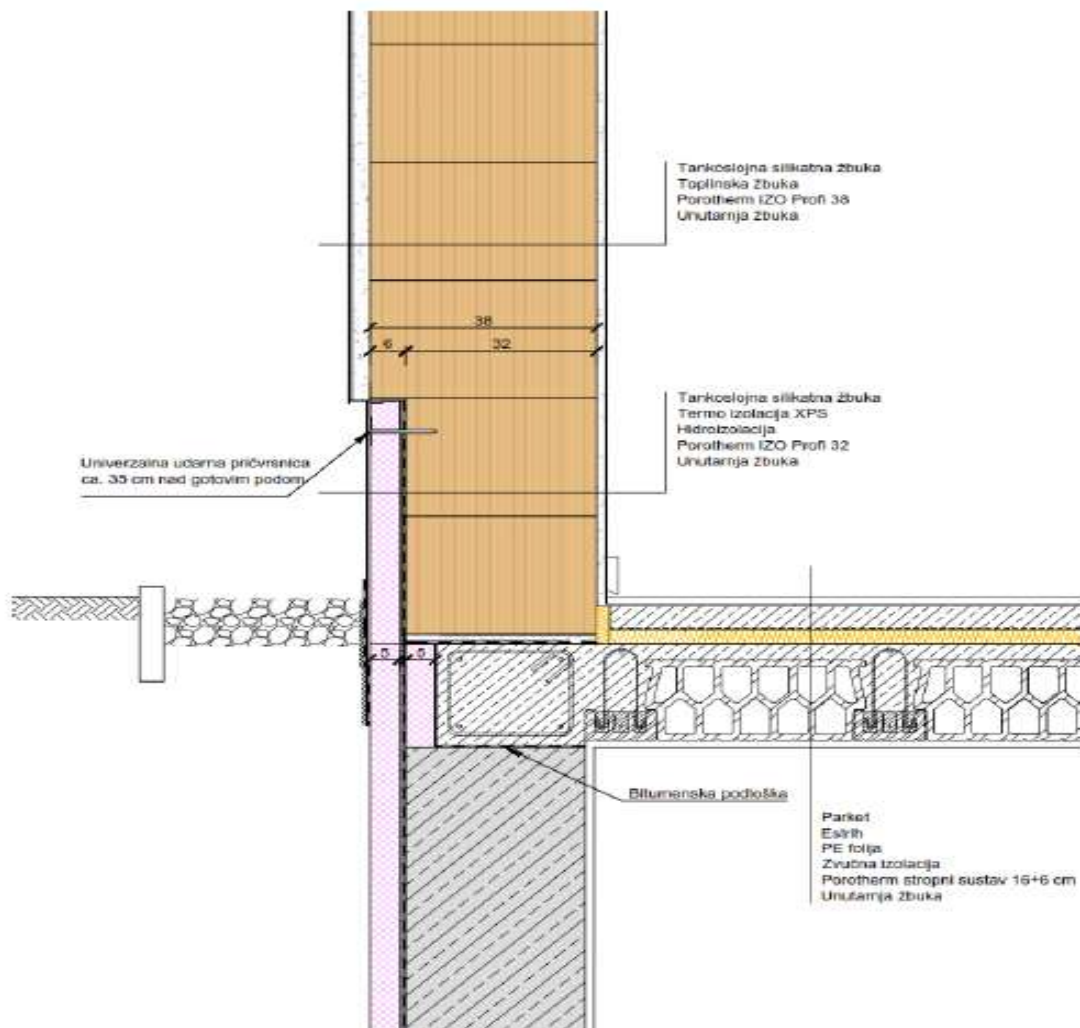


Temeljna ploča i zid sa IZO Profi opekom



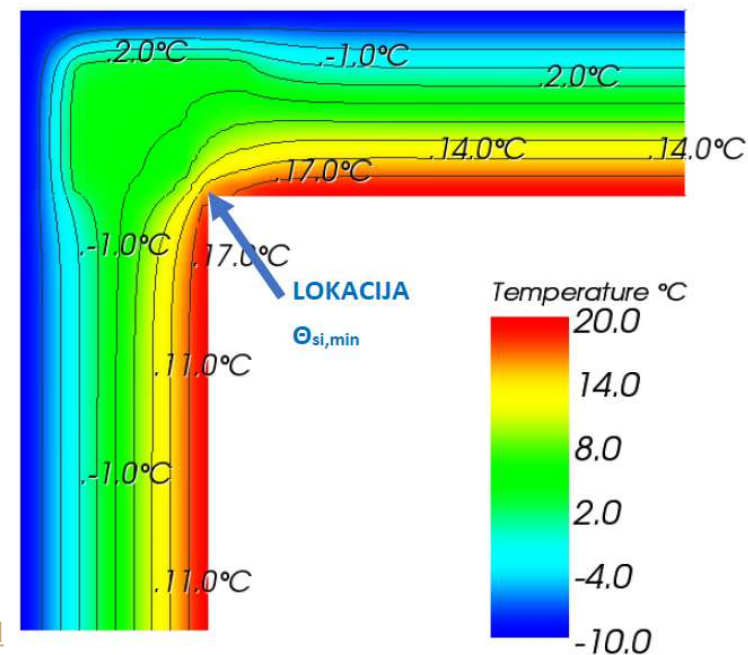
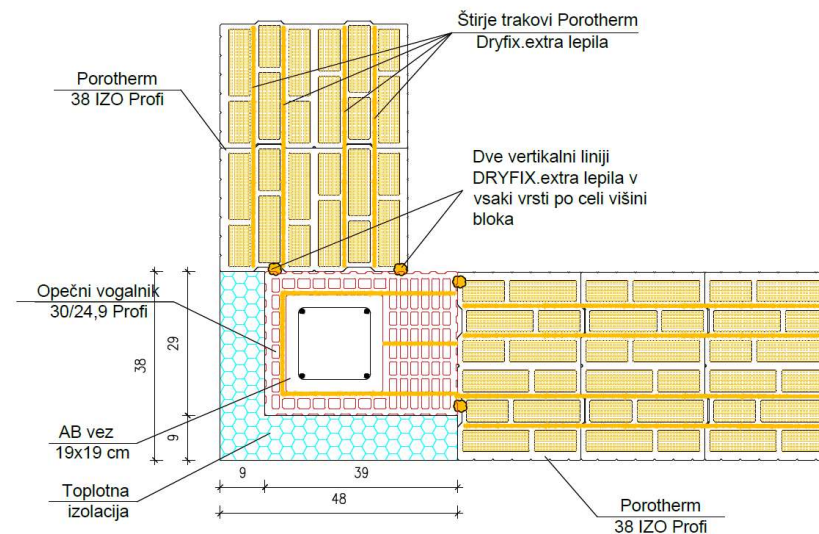
Izvor: Certificirani detalj, Konzorcij PH, Univerza u Ljubljani, Fakultet za arhitekturo
Dwg detalji dostupni na <https://www.wienerberger.hr/alati-i-servisi/preuzimanja/autocad-detalji.html>

Spoj stropa podruma sa vanjskim zidom



Izvor: Određivanje duljinskih koeficijenata prolaska topline
doc. dr. Bojan Milovanović, Sveučilište u Zagrebu, Građevinski fakultet, Zavod za materiale
Dwg detalji dostupni na <https://www.wienerberger.hr/alati-i-servisi/preuzimanja/autocad-detalji.html>

Vertikalni serklaži – rješenje sa kutom od opeke

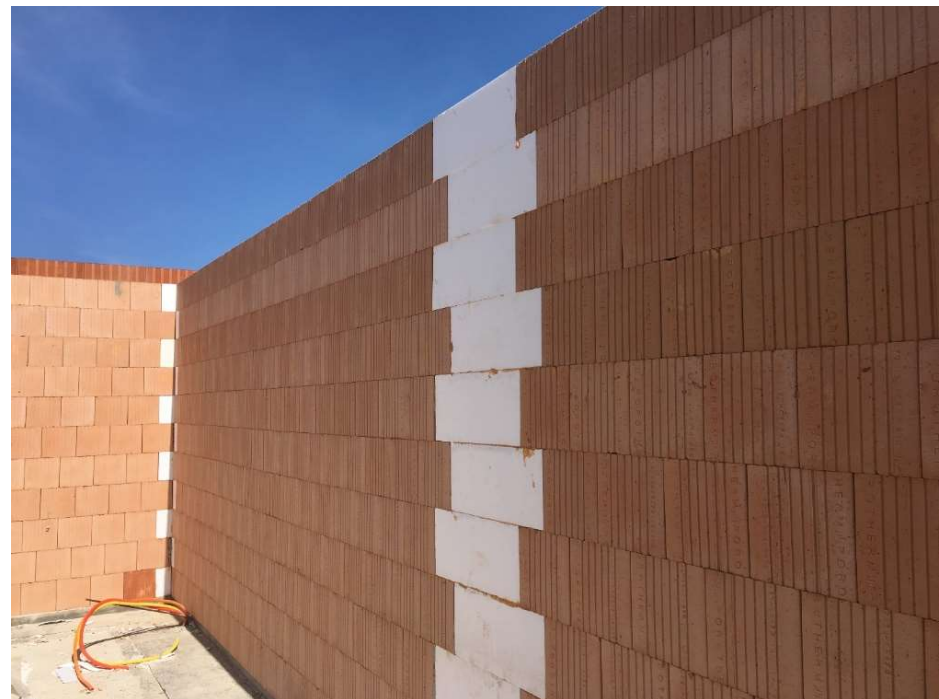


Izvor: Određivanje duljinskih koeficijenata prolaska topline
doc. dr. Bojan Milovanović, Sveučilište u Zagrebu, Građevinski fakultet, Zavod za materiale
Dwg detalji dostupni na <https://www.wienerberger.hr/alati-i-servisi/preuzimanja/autocad-detalji.html>

Vertikalni serklaži - DRYFIX kutevi



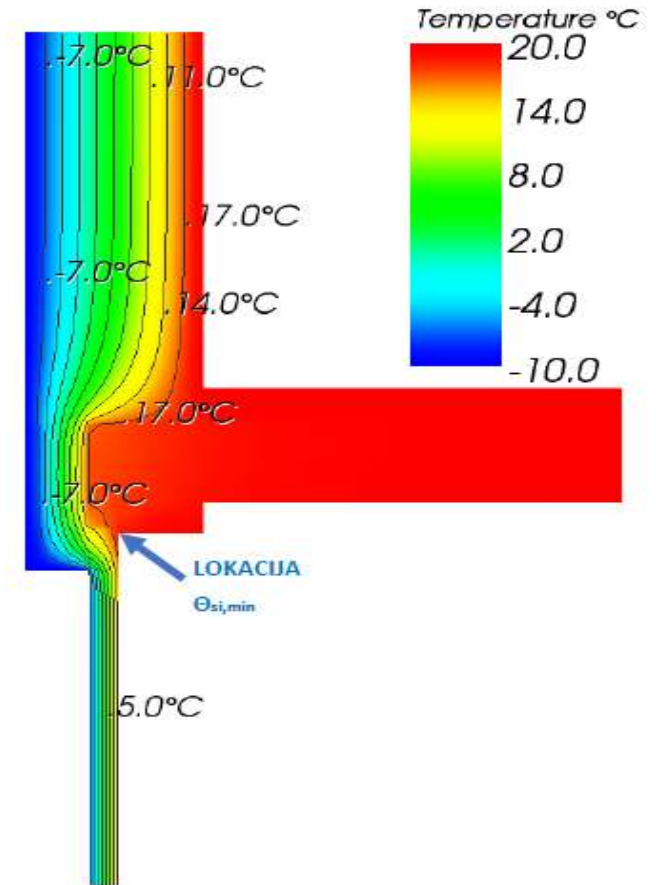
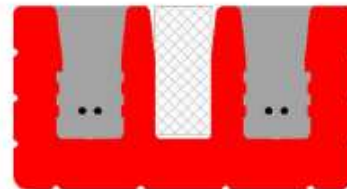
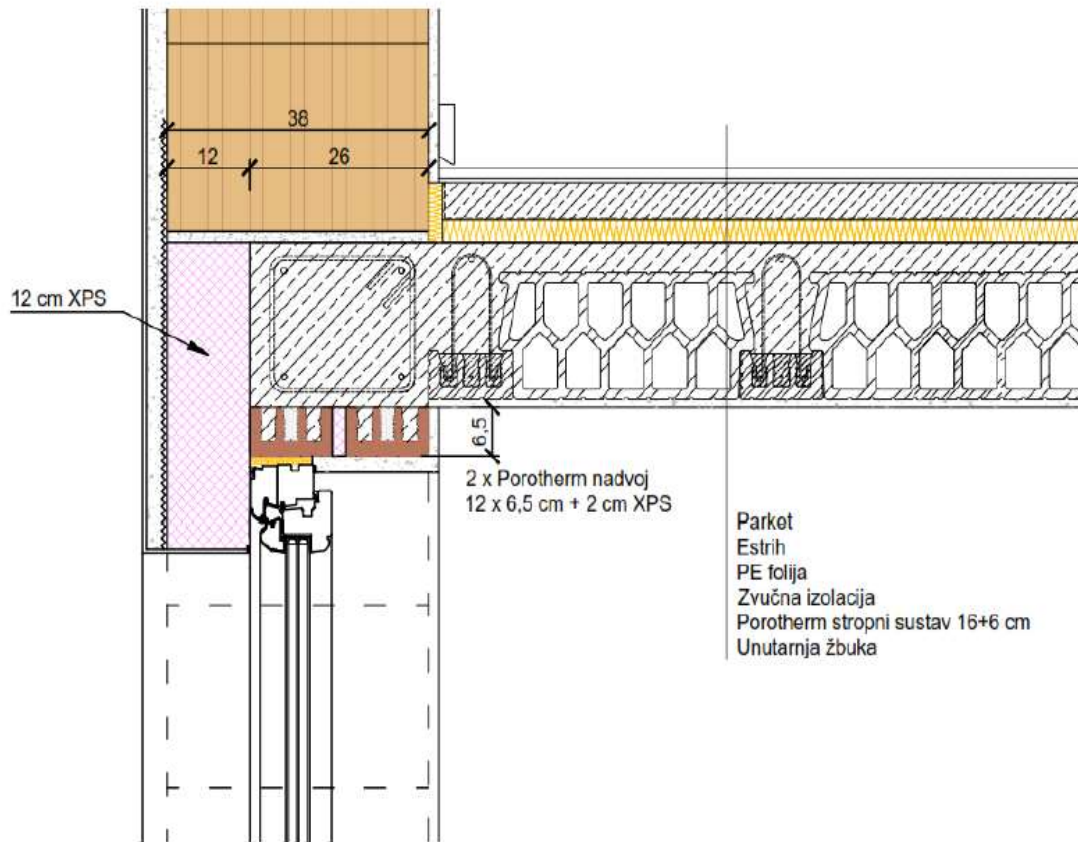
Porotherm 38 IZO Profi – rješenje vertikalnih serkalža sa dryfix kutom



DRYFIX kut 38 u zidu PTH 38 IZO Profi → $U = 0,179 \text{ W/m}^2\text{K}$ // lagana žbuka 3 cm

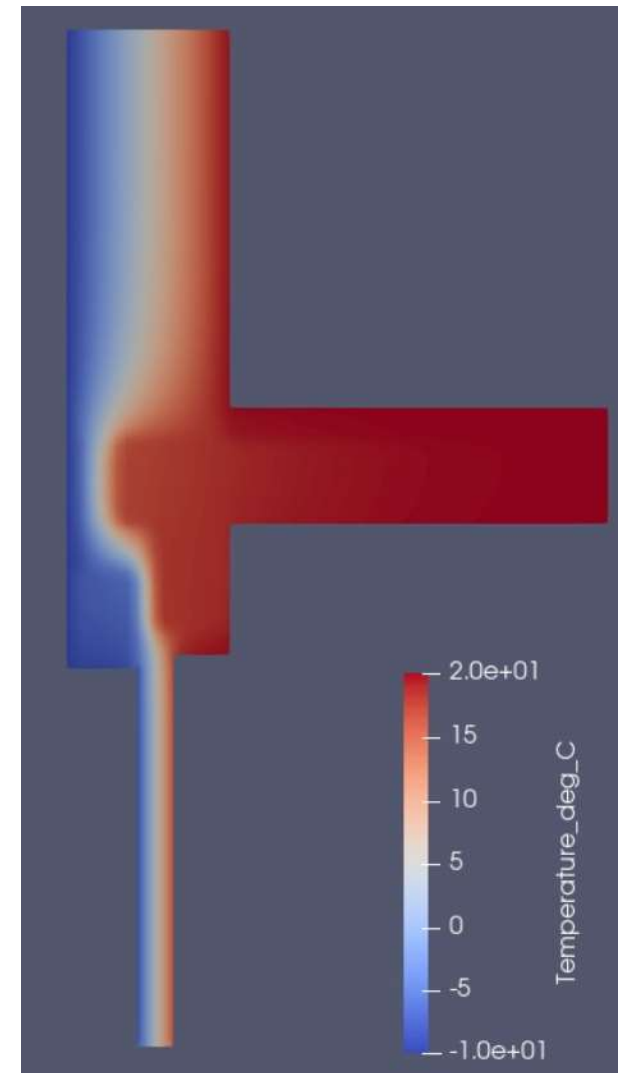
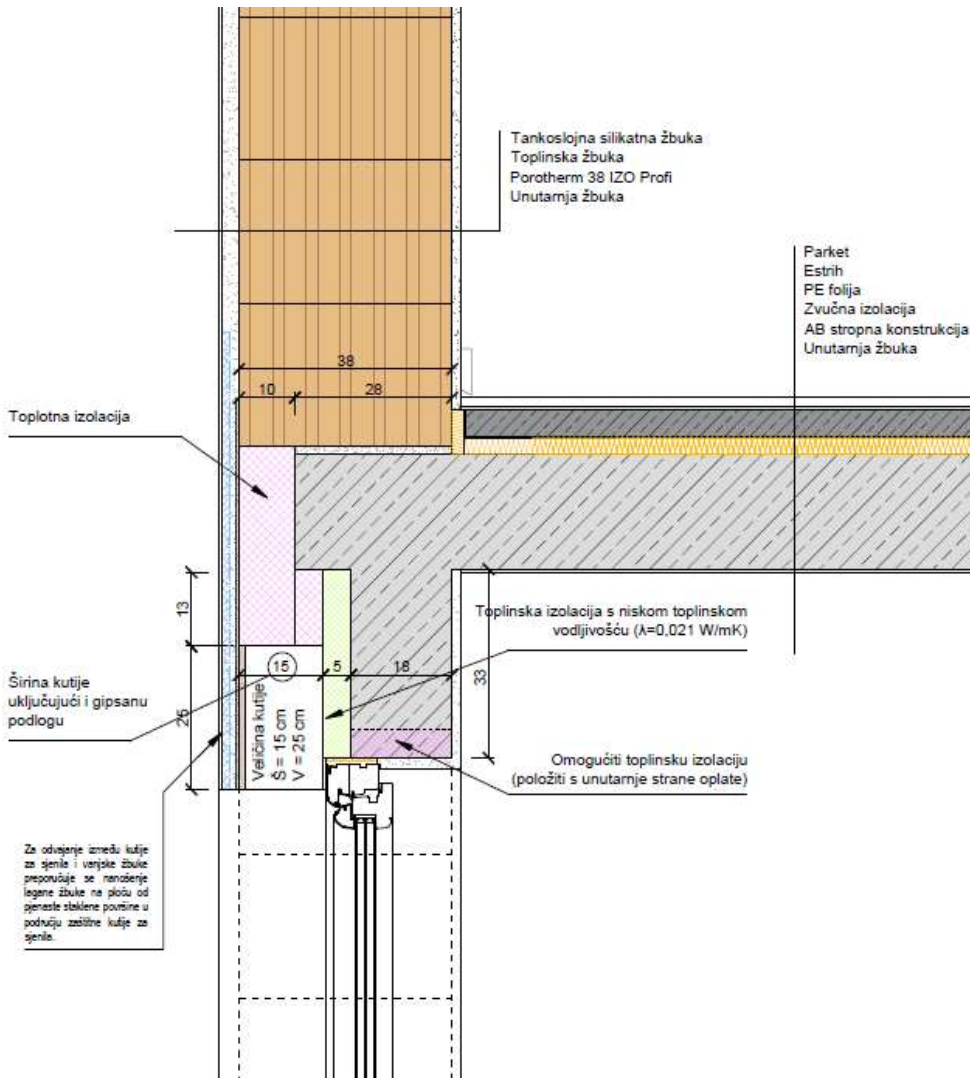
DRYFIX kut 38 u zidu PTH 38 IZO Profi → $U = 0,164 \text{ W/m}^2\text{K}$ // termo žbuka 4 cm

Nadvoj nad prozorom



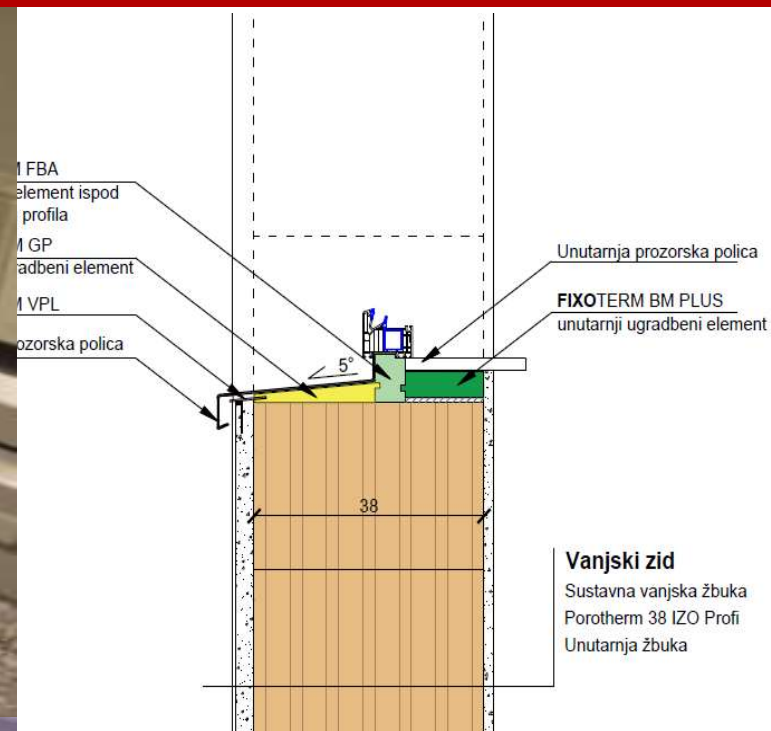
Izvor: Određivanje duljinskih koeficijenata prolaska topline
doc. dr. Bojan Milovanović, Sveučilište u Zagrebu, Građevinski fakultet, Zavod za materiale
Dwg detalji dostupni na <https://www.wienerberger.hr/alati-i-servisi/preuzimanja/autocad-detalji.html>

Prozor sa rolo ormarom

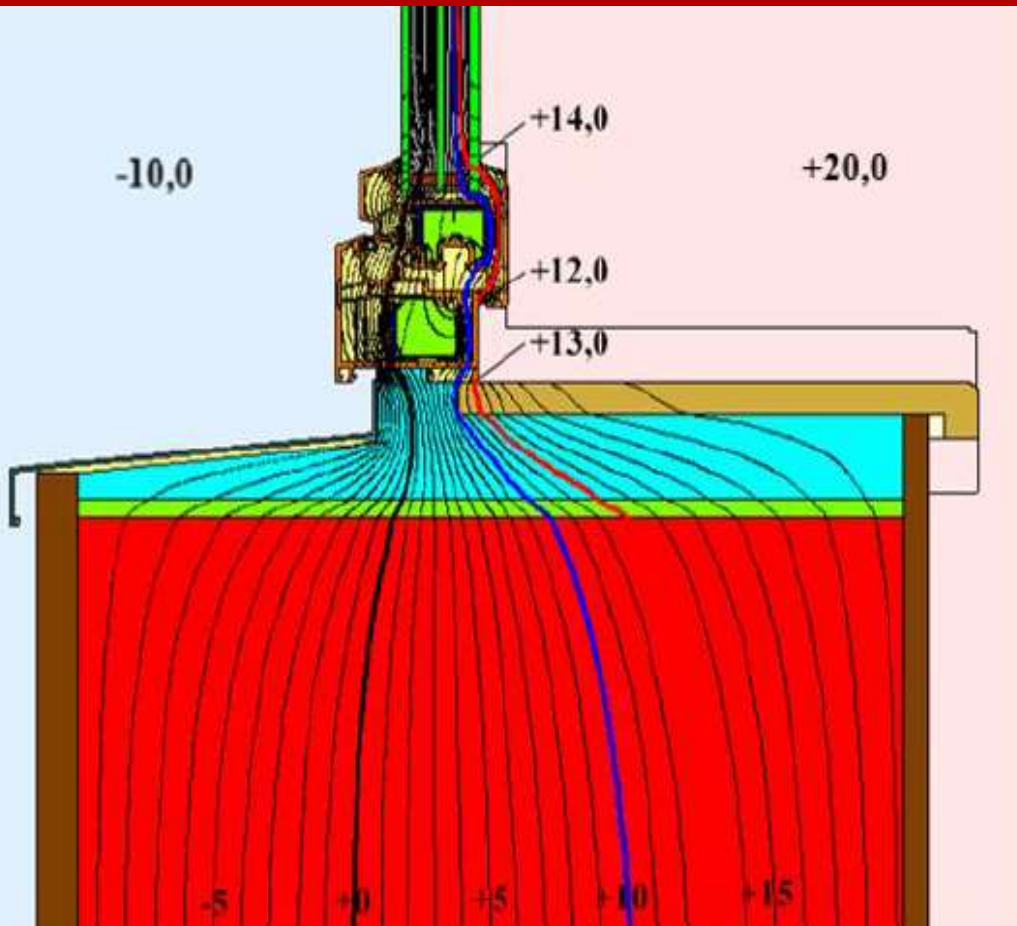


Izvor: Određivanje duljinskih koeficijenata prolaska topline
doc. dr. Bojan Milovanović, Sveučilište u Zagrebu, Građevinski fakultet, Zavod za materiale
Dwg detalji dostupni na www.wienerberger.hr

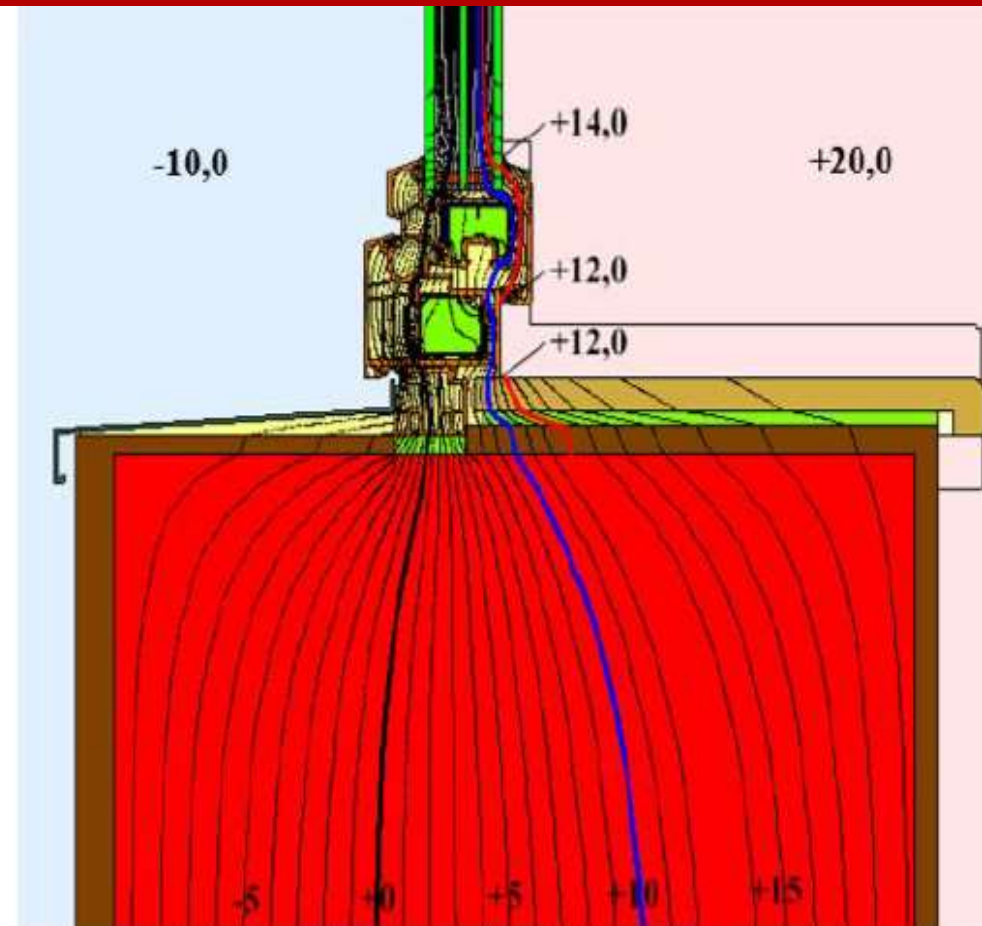
Ugradnja prozorskog profila – donji dio



Ugradnja prozorskog profila – donji dio



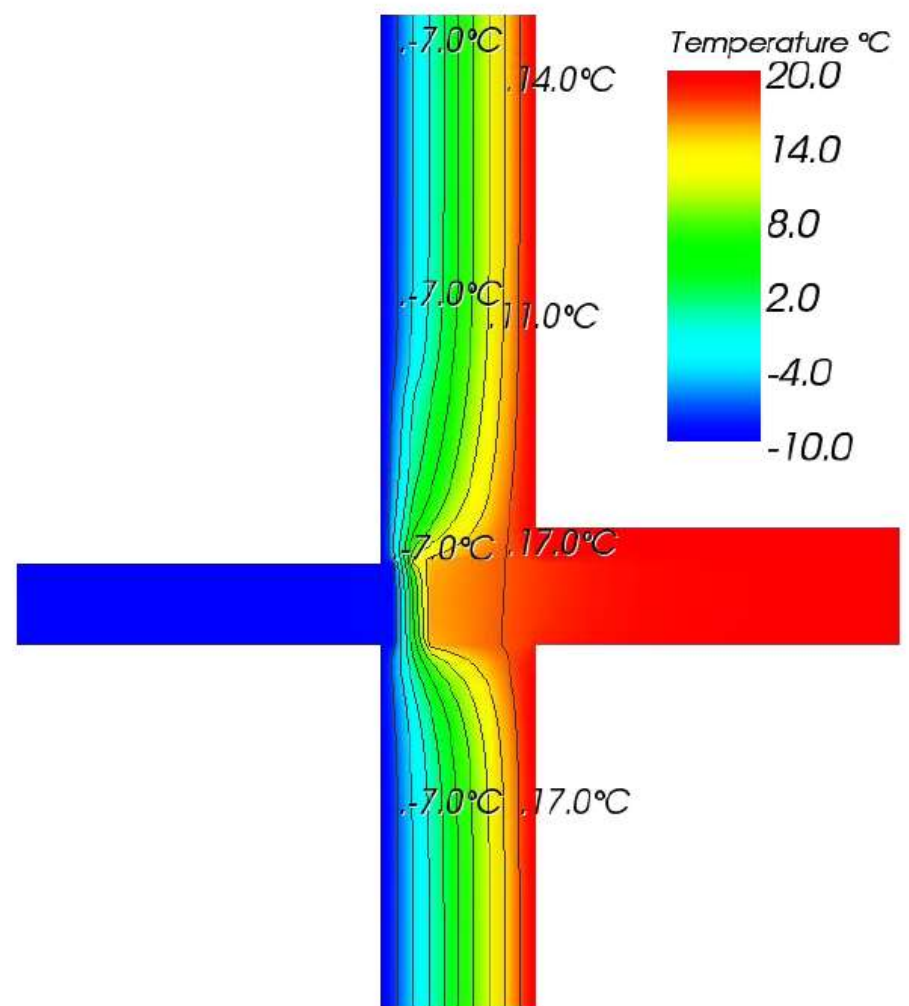
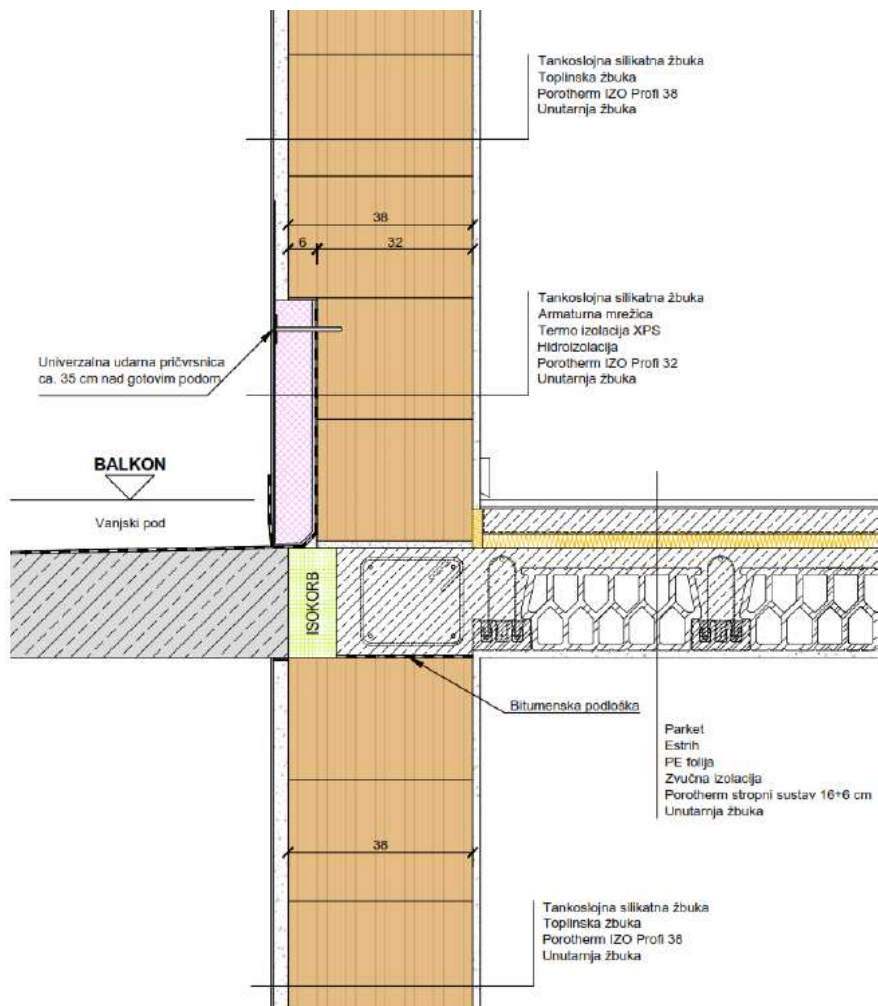
Sa elementom Fixotherm $\psi = 0,034 \text{ W/mK}$



Bez elementam Fixotherm $\psi = 0,059 \text{ W/mK}$


Wienerberger

Proboj kroz ovojnicu zgrade – balkonska ploča sa Isokorb elementom

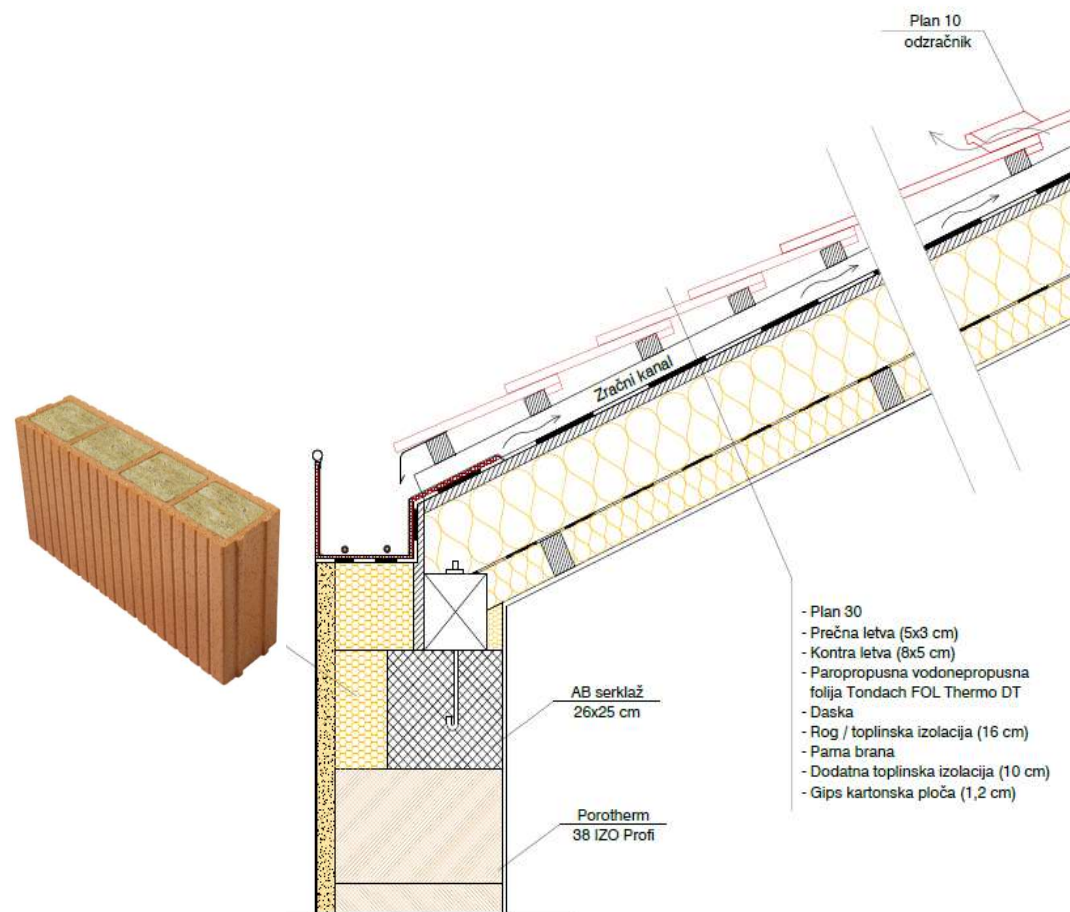


Balkonski priključak sa **Schöck Isokorb** elementom

Duljinski koeficijent prijenosa topline $\psi_e = 0,0789 \text{ W/mK}$

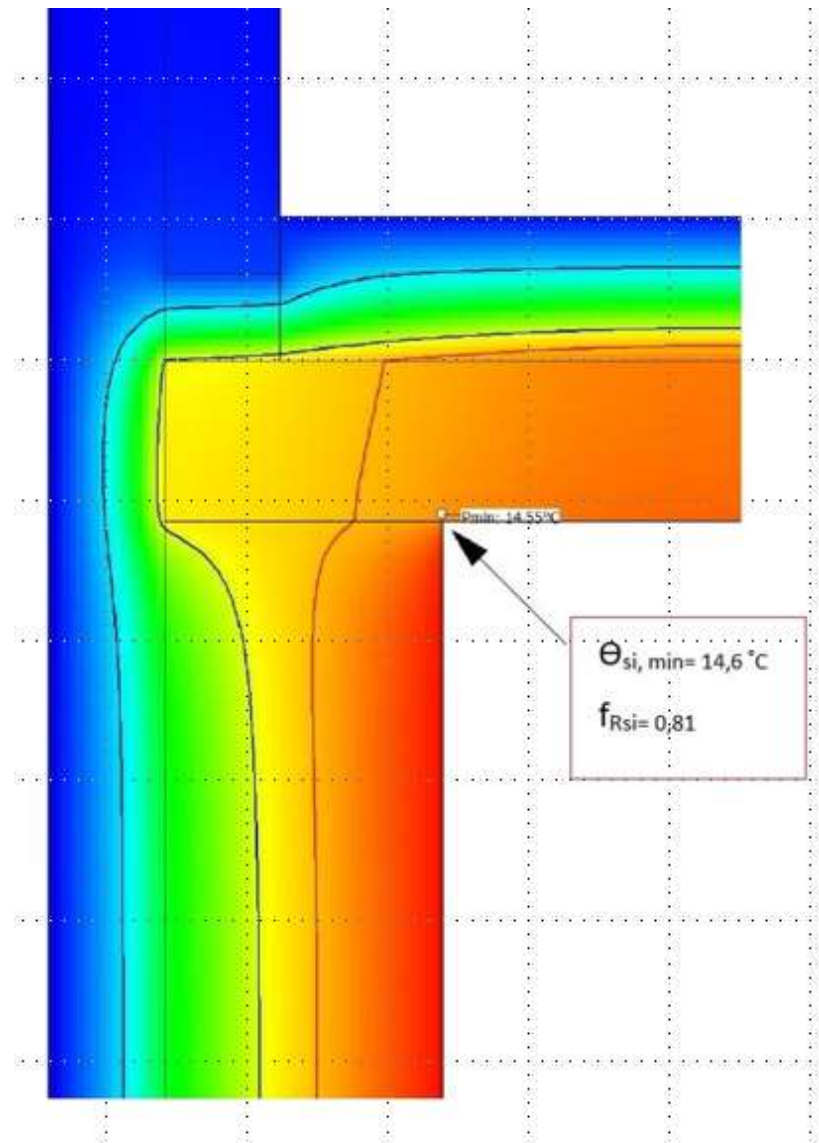
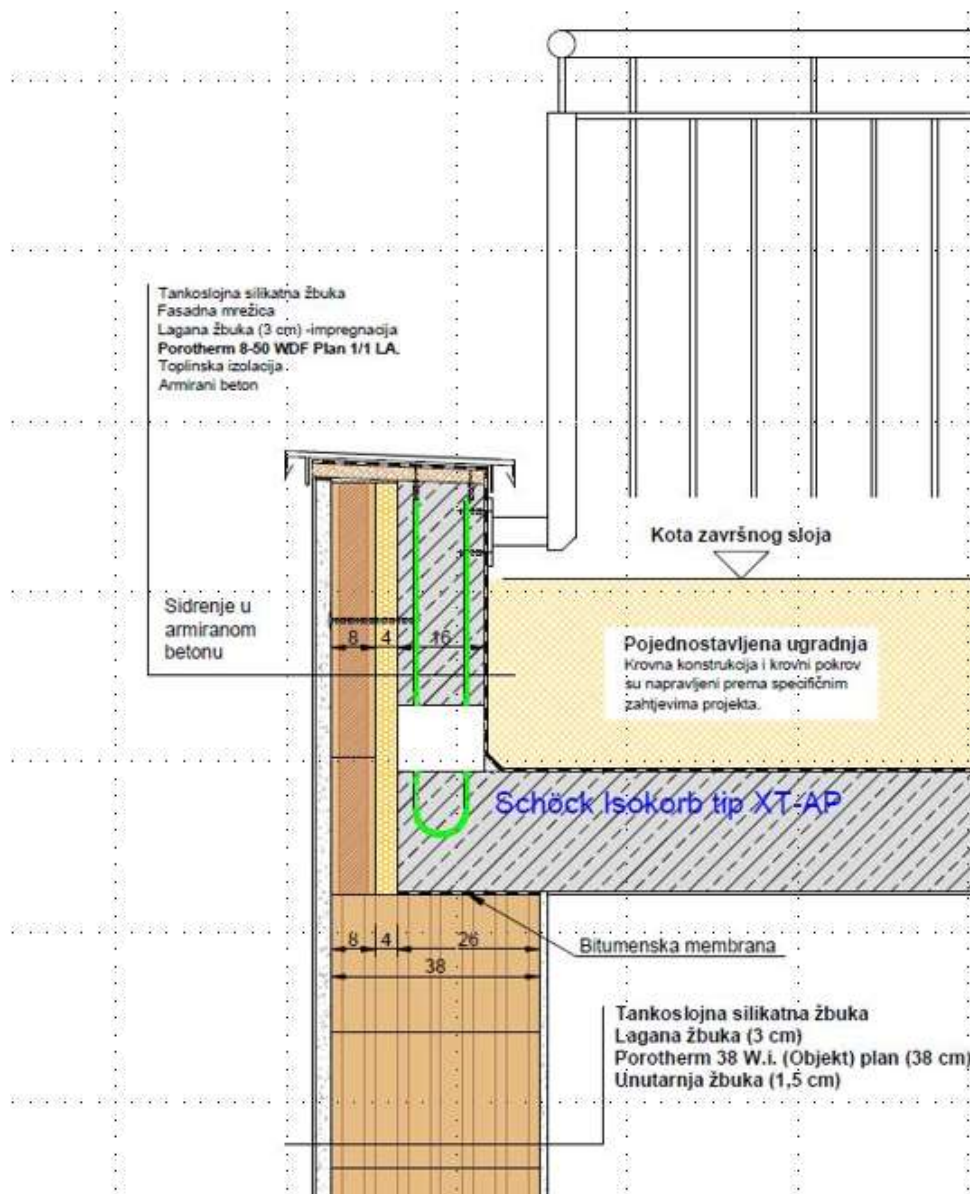
Izvor: Određivanje duljinskih koeficijenata prolaska topline
doc. dr. Bojan Milovanović, Sveučilište u Zagrebu, Građevinski fakultet,
Zavod za materiale
Dwg detalji dostupni na www.wienerberger.hr

Detajl zida i kosog krova



Izvor: Wienerberger NZEB rješenja
Dwg detalji dostupni na www.wienerberger.hr

Atika sa Isokorb elementom



Atika – priključak sa Schöck Isokorb elementom

Koeficijent prijenosa topline $\psi_e = 0,02 \text{ W/mK}$



Hvala na pažnji.

Irena.Hospel@wienerberger.com
www.wienerberger.hr